

**Site Map**

**North Carolina**

**Monitoring Well Network**

**Atlantic Site, V 12I**

**Atlantic, Carteret County, NC**

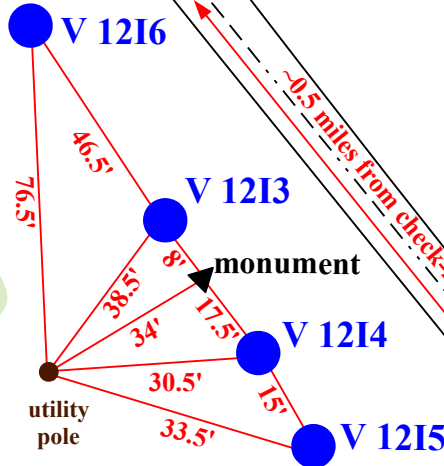
**NOTE:** This map is for informational purposes only. It does not authorize any party to enter onto any lands depicted herein.



**Atlantic Monitoring Station (4 wells)**

*Access by Appointment Only Per Marine Corps Air Station Cherry Point*

Latitude: 34.88516  
Longitude: -76.35479



**R10 Monument Coordinates (04-10-2015)**  
Latitude: 34.885196  
Longitude: -76.354822

500 ft